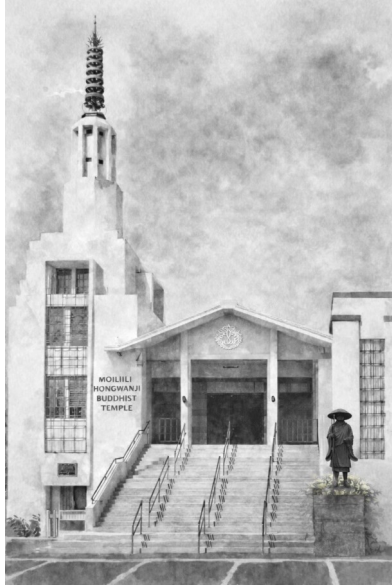


ADDRESS SERVICE REQUESTED



---

## REV. SHIGENORI MAKINO “TINY BUBBLES IN THE DHARMA OCEAN”

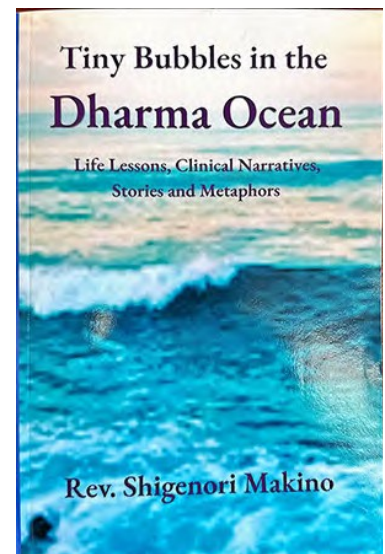
At a ministers’ seminar in Hawaii, a young minister once asked why his Dharma talk failed to move anyone. The answer he received was simple - and piercing: “Because you didn’t touch their hearts.”

In *Tiny Bubbles in the Dharma Ocean*, Rev. Shigenori Makino reflects on that moment and invites us into a quiet, profound exploration of how we truly connect - with others, and with ourselves. Drawing on decades of experience as a Buddhist minister, chaplain, and teacher, Rev. Makino reveals how the deepest truths are not found in complicated explanations, but in simple, living words — words that arise from deep listening, sincere reflection, and genuine experience. Inspired by the spirit of haiku and the Buddhist principle of skillful means, these teachings use story, metaphor, and gentle insight to bring the Dharma to life.

In a world filled with noise, distraction, and uncertainty, this book offers something rare: a chance to pause ... to listen... and to rediscover what truly matters. Each reflection is like a tiny bubble rising through the vast ocean — quiet, fleeting, yet filled with meaning.

Rev. Shigenori Makino is a Retired Minister of the Honpa Hongwanji Mission of Hawaii.

Rev. Makino’s new book is available for purchase at HQ Bookstore or on Amazon.





# The White Way

---

*Mo‘ili‘ili Hongwanji is the center of Shin Buddhist spiritual growth, learning, and compassionate service to our Community.*

---

Temple Office: (808) 949-1659 [mhm@moililihongwanji.org](mailto:mhm@moililihongwanji.org) [www.moililihongwanji.org](http://www.moililihongwanji.org)  
Project Dana: (808) 945-3736 [info@projectdana.org](mailto:info@projectdana.org) [www.projectdana.org](http://www.projectdana.org)  
[www.facebook.com/MoililiHongwanji](https://www.facebook.com/MoililiHongwanji) [www.instagram.com/moililihongwanji/](https://www.instagram.com/moililihongwanji/)



## Remembering with Joy, Living with Gratitude

Rev. David Fujimoto, Board Certified Chaplain

There is a special excitement that rises in the heart when *Obon* season comes. Before the first drumbeat sounds, memories begin to gather: the smell of andagi drifting through the evening air, the fragrance of incense, the glow of the lanterns, and the sight of families and friends circling the yagura together. The annual Bon Dance comes alive with color, music, laughter, and movement. Yet beneath all this, there is something deeper, a quiet feeling of remembrance, appreciation, and gratitude.

For many of us, *Obon* is not only a festival we attend, but also a doorway into the past. We remember walking onto the temple grounds with our grandparents, holding their hands, watching how they greeted old friends, bowed before the altar, or stood quietly in memory of loved ones. We remember the way they seemed to know every song, every dance, every face. Perhaps as children we were more interested in the food, and the games, especially if we won a goldfish or a guppy. But now, looking back, we begin to understand that our grandparents were teaching us without many words. They were showing us what it means to belong to a community, to live with gratitude, and to receive a tradition that had been handed down through generations.

In the *Jōdo Shinshū* Tradition, *Obon* is sometimes called *Kangi-e*, a “gathering of joy.” This joy is not merely entertainment or nostalgia. It is the joy of being reminded that our lives are supported by countless causes and conditions, including the lives of those who came before us. *Obon* is a time to remember our ancestors, family members, teachers, ministers, friends, and all beings whose efforts, sacrifices, kindness, and love made our present lives possible.

The Bon Dance expresses this teaching with the whole body. As the taiko sounds and the dancers move in a circle, young and old, experienced and beginner, all are welcomed into the same rhythm. We do not dance alone. We dance together. We dance because we have been carried by others. We dance because the Dharma calls us to awaken from the narrow world of “me” and “mine” into the larger world of interdependence.

Shinran *Shōnin*’s teaching helps us understand *Obon* in a distinctly *Jōdo Shinshū* way. We do not gather because our ancestors are wandering spirits who must be brought back or sent away. Rather, we gather because the lives of those who have gone before us become a condition for our own awakening. Through remembering them, we are brought to hear the calling of Amida Buddha’s Compassion. Shinran describes the working of Amida’s Vow as the directing of virtue to all beings. This working is not something we create by our own power; it is the compassion that reaches us, embraces us, and turns us toward the path of awakening.

Shinran wrote, “The great Practice is to say the Name of the Tathagata of Unhindered Light.” These words remind us that the *Nembutsu*, *Namo Amida Butsu*, is not simply our expression of devotion. It is Amida Buddha’s Compassionate working becoming present in our lives. When we say *Namo Amida Butsu* at *Obon*, we are not boasting of our own goodness or spiritual achievement. We are receiving the Name with humility and gratitude.

Shinran also wrote in his hymns, “My eyes being hindered by blind passions, I cannot perceive the light that grasps me; yet the great compassion, without tiring, illumines me always.” This is a powerful reflection for *Obon*. We often live as if we are self-made and independent. We forget the people who cooked for us, worked for us, protected us, encouraged us, and loved us. We forget the grandparents who brought us to temple, the parents who carried responsibilities quietly, and the community members who preserved the Dharma so that we could encounter it today. Even when we forget, the light of compassion continues to shine.

That is why *Obon* is both joyful and serious. It is joyful because we come together with music, food, dancing, and friendship. It is serious because remembrance asks something of us. If we truly appreciate those who went before us, then our gratitude cannot remain only a feeling. It must become a way of life. We are invited to rededicate ourselves to lives of kindness, humility, patience, and service. We are invited to ask: How shall I live, knowing that my life has been made possible by so many others?

Shinran presents the Pure Land Path as the working of boundless compassion that brings foolish beings like ourselves to awakening. This Teaching is not separate from the ordinary scenes of *Obon*. The lanterns, the incense, the temple bells, the old songs, the laughter of children, and the circle of dancers all become reminders that we are embraced within a life larger than ourselves. The past is not gone; it lives in us as memory, influence, teaching, and gratitude.

When I think of *Obon*, I think of my grandparents. I think of the way their presence made the temple feel familiar and safe. I think of their voices, their hands, their quiet faith, and the countless things they did that I did not fully understand at the time. Now, through the Dharma, I see that those memories are not only sentimental. They are teachings. They call me to gratitude. They call me to *Namo Amida Butsu*.

So, when we gather for *Obon* and Bon Dance, let us come with joy. Let us enjoy the food, the music, the dancing, the lanterns, and the fellowship. But let us also pause to bow our heads in appreciation. Let us remember those who went before us—not as distant figures of the past, but as living conditions that continue to shape our hearts. In the spirit of *Jōdo Shinshū*, may *Obon* become a time to awaken to the compassion that embraces us, to give thanks for the lives that support us, and to rededicate ourselves to living with humility, appreciation, and gratitude.

---

## Father’s Day

Father’s Day 2026 turned out to be a big day. It was a day honoring all dads, grandpas, uncles, big brothers, mentors and men folks. Rev. David Fujimoto gave a great sermon, with his dad in attendance. That must have been tough!

The Happy Strummers & singers sang “FATHER” followed by “For He’s a Jolly Good Fellow” and “Oh My Papa.” Everyone then stood in line to a huge spread of refreshments contributed by the women folks. There were so many choices followed by comments as to how on the food was.

Mo’ili’ili is lucky to have so many good musicians and chefs within the Sangha. Thank you everyone for a Happy Father's Day!



# Message from the President

It is hard to believe that we are already halfway through the calendar year. As I reflect on my role as the new President of the Mō'ili'ili Hongwanji Mission Board, I have been thinking carefully about the focus and goals I hope to accomplish during my term. To be candid, I have struggled at times to define those priorities.

For many years, both our Sangha and Board have shared concerns about the aging of our membership and the challenge of attracting younger members who can help sustain our temple into the future. This is not unique to Mō'ili'ili Hongwanji; many religious organizations face similar challenges. Nevertheless, I believe this issue deserves our thoughtful and serious attention.

Several years ago, we participated in a strategic planning workshop facilitated by Glenn Hamamura of Wahiawa Hongwanji. That process led to several important initiatives, including our audio/visual improvements and capital campaign to fund much needed temple renovations. I believe we successfully accomplished most, if not all, of the priorities that emerged from that effort.

For that reason, I believe the time has come for us to once again come together as a Sangha and Board to thoughtfully consider what we hope to accomplish over the next five to ten years. As we undertake that process, I hope we will be guided by our mission: *"Moiliili Hongwanji is the center of Shin Buddhist spiritual growth, learning, and compassionate service to our community."*

I am deeply grateful for the patience, support, and encouragement that you have extended to me. The future of our temple is not the responsibility of any one individual—it is a shared endeavor that depends on the wisdom, dedication, and participation of all of us. I welcome your ideas, suggestions, and perspectives as we begin this important conversation. In the coming months, I look forward to exploring resources and opportunities that can help guide us in strategic planning and goal setting for the future.

Together, I believe we can build on the legacy of those who came before us while creating a strong and vibrant future for Mō'ili'ili Hongwanji Mission.

In Gassho,  
Martha Samson

---

## MH BWA

As the days get longer, July is a time for celebration. Mō'ili'ili Hongwanji's Bon Dance returns to the old Varsity building parking lot on Saturday, July 4. BWA members, along with other volunteers such as the Hawaii Kai Jaycees and Jr. YBA, prepare spam musubi as one of the items to be sold. It is a festive time for the community to gather, eat and dance as we pay respects to our ancestors. Many thanks to those who donated spam, rice and supplies.

Part of the Obon season includes Obon services. On July 11, BWA will assist with the 10 a.m. Bon Mairi and 6 p.m. Hatsubon services by greeting worshippers and serving as emcees. Hatsubon marks the first anniversary of a loved one's passing.

On August 22, 2026 Honolulu United (HU) BWA will hold the 2026 HU BWA Membership Conference and Annual General Meeting at Hawaii Betsuin. In preparation for next year's 18th World Buddhist Women's Convention, attendees are being asked to wear a mu'umu'u, as wearable aloha, and to learn the convention theme song, *Live Peace, Live Aloha, Live As One in the Nembutsu*.

Finally, we are mourning the loss of two long-time members who were actively involved with Mō'ili'ili Hongwanji BWA. Our condolences go out to the families of Ethel Shintaku and Joanne Sakata.

Submitted by Susan Okano



## ***P.S. A Capital Campaign Update -***

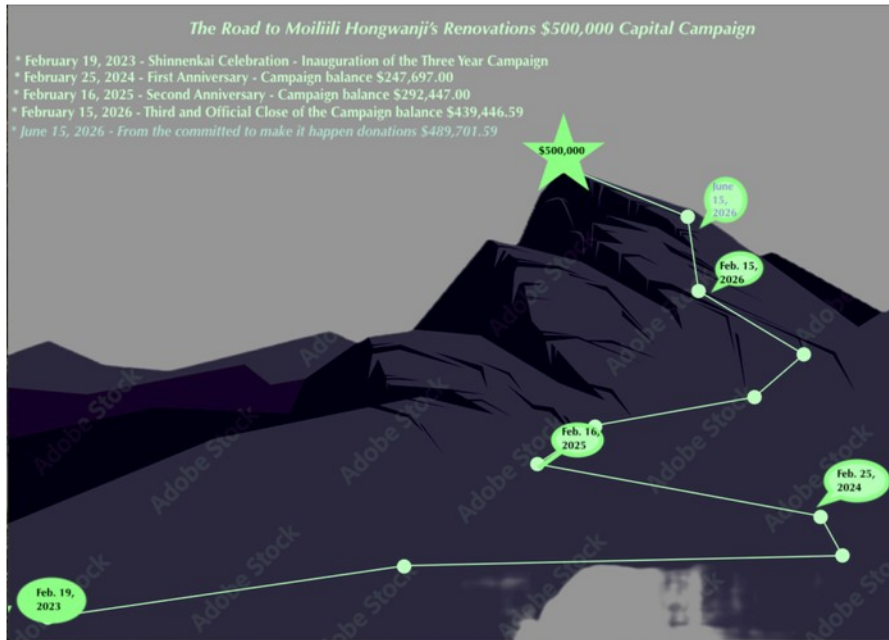
To our “dedicated” members and friends, the capital campaign total has reached **\$489,701.59!**

Your moving support brings our \$500,000.00 goal within clear reach!

*With much gratefulness,*

*Nancy Shimamoto*

Former Chairperson of the Capital Campaign Fund Drive



### ***Renovating News:***

Temple renovations progress report:

Contractor, Ralph S. Inouye Co., Ltd. provided a tentative schedule for construction.

- |                        |                                      |
|------------------------|--------------------------------------|
| i. Restrooms           | July 15 – November 6, 2026           |
| ii. Office             | July 15 – 22, 2026                   |
| iii. Makai Parking Lot | September 23 – October 8, 2026       |
| iv. Social Halls       | October 26, 2026 – February 12, 2027 |
| v. Kitchen             | November 6 – December 2, 2026        |
| vi. Annex              | December 2, 2026 – January 7, 2027   |

*From the Renovations Committee May 2026 Report*

## Moiili Summer Fest/Moiili Hongwanji Bon Dance

Thousands of kama'āina and visitors are expected to gather in the heart of historic Mō'ili'ili as the 13<sup>th</sup> Annual [Mō'ili'ili Summer Fest](#) returns to the Waiānuenue ma Kapa'akea parking lot (the former Varsity Building parking lot) and Coyne Street on **Saturday, July 4, 2026, from 5:00 p.m. to 10:00 p.m.**

This year marks a special homecoming as the festival returns to where it all began, transforming the streets of Mō'ili'ili into a vibrant gathering place filled with music, dancing, food, shopping, and community connection. Mō'ili'ili Summer Fest has become one of Hawai'i's most anticipated summer traditions, drawing more than 10,000 attendees each year.

Admission is free and open to the public. Festival attendees can enjoy Honolulu's largest bon dance, more than 60 local food vendors, artisans and retailers, live entertainment, cultural demonstrations, and activities for all ages.

The celebration begins early with an **Andagi Night** on **Friday, July 3, from 4:00 p.m. to 8:00 p.m.** Guests can enjoy select food vendors, exclusive festival merchandise, and beloved local treats—including fresh Okinawan andagi—while getting a first taste of the weekend festivities. The Friday night gathering offers a fun and flavorful kickoff to the holiday weekend before the main festival takes center stage on Saturday. Free onsite parking and open to the public!

Adding to the weekend festivities, on Friday, July 3 at 5:30 p.m., Ed Sugimoto of VH07V (Aloha Revolution) and Jodi Kamisato — a local musician and owner of 'Ukulele Hale — will create a special rendition of Hawai'i's beloved anthem, "Aloha Friday." The collaboration celebrates the neighborhood's vibrant small business community while inviting residents and visitors alike to spend the holiday weekend supporting local shops, restaurants, and vendors throughout Mō'ili'ili. We encourage attendees to be a part of the video recording!

### What's New This Year:

- **New Layout:** A separate dance area, along with rows of vendors - retail and food vendors for all to enjoy. Food trucks will be located on Coyne Street.
- **New Vendors:** Over 60 local vendors will be featured this year. There will be something for everyone from traditional summer festival foods to one-of-a-kind desserts, along with great retail shopping and informative vendors.
- **Exclusive Festival Collaborations:**
  - Sumo Fish x Summer Fest limited-edition t-shirts and stickers
  - Aloha Matcha limited-edition Watermelon Matcha, perfect for a summer festival (Saturday only)
  - Castaways Ice Cream's limited-edition Butter Mochi Ice Cream Proceeds from each sale will go towards the production of the festival.

### Entertainment highlights include:

- Kaikaliliaalohahawaii Duo
- MikAnS (Japanese Shamisen & Taiko combo)
- Sakura Saxophone Ensemble
- Taiko Center of the Pacific
- Traditional Opening Service by Mō'ili'ili Hongwanji Mission

### Parking Options:

- **Free parking and complimentary shuttle service** at UH Mānoa Lower Campus (4:00 p.m. – 11:00 p.m.), shuttle stop is near Ching Field by Gate 2. Trolley shuttles provided by TP Transportation.
- Limited Premium Event Parking - located mauka of the festival. \$25 from 3:30 p.m. to 10:30 p.m. (including limited handicap parking). No in/out privileges. Enter from University Ave. First come, first serve.
- Shinnyo-En Hawai'i - South Beretania St. (left side). Available from 3:30 p.m. to 10:30 p.m. Donations are welcomed.

Nearby paid public parking lots.

[Mō'ili'ili Summer Fest](#) is presented by Mō'ili'ili Festivals, a nonprofit 501(c)(3) organization. Planned with support from Mō'ili'ili Hongwanji Mission, Japanese Cultural Center of Hawai'i, Mō'ili'ili Community Center, the University of Hawai'i at Mānoa, Hawai'i Kai Jaycees, and longtime community partner Ke Kula 'o Kamehameha, the festival reflects a shared commitment to preserving cultural traditions while strengthening community connections.

For more information, vendor listings, parking details, and entertainment updates, visit [www.moiliilisummerfest.org](http://www.moiliilisummerfest.org).

*Everyone's favorite Bon Dance foods at MHM Concession:*

*Beef Stew, Chow Funn, Goteborg Musubi, Spam Musubi, Teri Burger, Saimin, Yudofu, Natto & Mochi*



### Upcoming Bon Dances:

July 11 - Windward Buddhist Temple

July 17 & 18 - Shinshu Kyokai

July 18 - Jikoen Hongwanji

July 25 - Aiea Hongwanji

August 8 - Pearl City Hongwanji

August 21 & 22 - Mililani Hongwanji

## Dharma School Presentation on Japan Trip

The Dharma School students gave a 1/2 hour presentation and shared over 100 photos of their Japan Trip. The Dharma School students (Christopher Meade, Amanda Meade, Nicholas Meade, Jayden Takiue, Kayla Takiue, Joshua Oh Young and Luke Oh Young) and their chaperone Ann Miyasaki departed Honolulu on December 19, 2025. They arrived in Tokyo and caught the Shinkansen to Kyoto.

Aunty Ann, Christopher and Amanda participated in the Kikyoshiki ceremony and received their Homyo (Buddhist name) at Nishi Hongwanji, the head temple of Jodo Shinshu. Tabitha Kobata was their English speaking guide (originally from Hawaii) took them on a private tour of the temple.

We hiked the crowded streets up to Kiyomizudera Temple, ate lots of snacks and shopped. In the afternoon we took the Shinkansen to Hiroshima. The BWA sponsored a private tour of Hiroshima. We visited the Hiroshima Peace Memorial, Children's Peace Memorial, the Hypocenter, Peace Bell, Chinese Parasol Tree, Flame of Peace, Memorial Cenotaph, and Mitaki-dera.

For lunch we enjoyed eating okonomiyaki with a spatula. Later in the day we rode a ferry to Miyajima Island where we spent the night. Before sunrise, Aunty Ann and Nick walked out to the O-Torii. Later that morning after everyone else woke up, we visited the Hokoku-Jinga Shrine, Momijidani Park, and rode the Miyajima Ropeway to the top of Mt. Misen and hiked to the Reika-do Eternal Fire Hall. It was Christmas Eve and our next stop was Osaka. We walked the beautifully lit streets of Dotonbori and played games at the Round One Stadium in Sennichimae.

Then it was back to Tokyo where we went to Teamlabs Planets which is a hands on art museum. We took a 7-hour train ride to Hokkaido. We spent 1 day in Noboribetsu where we stayed at a traditional Ryokan and enjoyed a very special Kaiseki meal. After that, it was a short train ride to Sapporo where it was snowing and freezing. Some of us went snowboarding at Sapporo Teine, visited the Hill of the Buddha at Makomanai Takino Cemetery, and explored the exhibits at the AOAQ aquarium. The trip ended back in Tokyo. The Dharma School students departed Tokyo on January 5, 2026 to return home. We were exhausted but looking forward to doing it again.

Submitted by:

Christopher Meade and

Joshua Oh Young





# Join Project Dana's Public Presentation Meetings!

## Upcoming Events:

Meeting Date: Wednesday, July 8, 2026

Time: 10:00 am to 11:30 am

Location: Zoom and Honpa Hongwanji Hawai'i Betsuin (1727 Pali Highway, Honolulu, HI 96813)

Topic: "Medicare Made Clear – Part 2" – This session is an educational presentation designed for both caregivers and Medicare beneficiaries. The session provides a clear, unbiased overview of Medicare basics, coverage options, enrollment periods, and available resources, helping caregivers and members feel more confident navigating Medicare decisions.

Speaker: Nanette Waialae, Hawai'i UnitedHealthcare

---

Meeting Date: Saturday, July 11, 2026

Time: 10:00 am to 11:30 am

Location: Zoom and Waipahu Hongwanji Buddhist Temple (94-821 Kuhaulua Street, Waipahu, HI 96797)

Topic: "Medicare Coverage of Home Health Care" – The goal of the session is for caregivers to learn about eligibility of home health care, what's covered and not covered, a comparison on home health care agencies and selecting an agency, home health care rights, and appeals. It is also an opportunity to learn about the Hawaii State Health Insurance Assistance Program (SHIP) and the services offered to Medicare

Speaker: ~~Jaele Wanda~~ Shelley Paet, James Marchant, Hawai'i SHIP

---

\*Zoom links will be provided by inquiry

**Please call or e-mail if you are interested on attending public presentations or need more information about the program:**

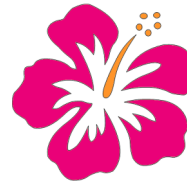
**Shelley Paet, C4C Program Specialist**

**(808) 945-3736**

**[cgsg@projectdana.org](mailto:cgsg@projectdana.org)**



# Mahalo Temple Donations



Dennis Asato	Julie Kaneko	Betsy Nishioka	Leighton Sakamoto
Hideo & Doris Hamada	William & Kathleen Kaneshige	<i>IMO Thomas Nishioka</i>	Renee Sakata
<i>IMO Yuriko Yoda</i>	Barbara Kanetani	Betsy Nishioka	Martha Samson
Keith Hamao	<i>IMO Tsuneo Kanetani</i>	<i>IMO Kimiko Omoto</i>	Linda Takai
Donna Higashi	Evelyn Masuoka	Oahu United BWA	Sandra Urata
<i>IMO Ethel Shintaku</i>	Moiliili Cemetery Association	Lois Ohta	Sharen Uyeunten
Harriet Hori	Alan Nakasone	<i>IMO Ethel Shintaku</i>	Iris Wasa-Uehisa
Deane & Ann Kadokawa	Ann Nakata	Pamela Omidyar	<i>IMO Jay Hamai</i>
Neil & Vicki Kajioka	<i>IMO Robert Nakata &amp; Satsu Tanaka</i>	Alison & Kevin Richards	

## Bon Dance Donations

Don & Joyce Arakaki	Juliethe Kajiwaru	Karen Murakami	Linda Sesoko
June Fujimoto	Brenda Kanae	Mae Nakashima	Nancy Shimamoto
Mari Fukuya	Kayleen Kawamura	Lynn Nakata	Lillian Shiraki
Hideo & Doris Hamada	Craig Kinoshita	Cheryl Oeda	
Peggy Hamashige	Brian Kunimune	Francis & Susan Okano	Michael & Wendy Sora-
Walter & Elaine Harada	Evelyn Masuoka	Stephen & Charlene Okano	Karen Sumida
Dong Hau	June Matsumoto	Carolyn Osedo	Jean Uyetake
Donna Higashi	Laura McWhorter	Leighton Sakamoto	Gary Watanabe
Harriet Hori	Lorraine & Clifford Mito	Kenneth & Jean Sato	Herbert & Betsy Watanabe
Deane & Ann Kadokawa			Jeanne Watari

### Capital Campaign Donations

Mildred Au  
 Margery Hamai  
 James Hatashima  
 Arnold Hori  
 William & Kathleen Kaneshige  
 Amy Matsuda  
 Thomas & Leatrice Sakamoto  
 Sharon Seki  
 Nancy Shimamoto  
*IMO Roy's birthday*  
 Virginia Tanji

### Obon Donations

Bert & Hazel Maedo  
*IMO Maedo family*  
 Connie Phillips  
 Carol Shiraki  
*IMO Frank & Natsuko Kunimune*  
 Annette & Earl Matsuoka  
 Honest Uyeno  
 Kathryn Yoshida

### Spring Ohigan Donations

Donna Higashi  
 Wendy Nakanishi  
 Ruby Saito  
 Thomas & Leatrice Sakamoto  
 Sumie Sonoda

### Hoonko Donation

Thomas and Leatrice Sakamoto

### Gotan-e Donation

John & Laura Maruyama

### Hanamatsuri Donation

Richard and  
 Joyce Fujimoto

# CALENDAR OF EVENTS

(Contact the office for Zoom link )

## July 2026

- 5 9:00 AM CANCELLED
- 12 9:00 AM Obon and Remembrance Day Service  
Rev. Blayne Higa
- 19 9:00 AM Family Dharma Service  
Dave Atcheson
- 26 9:00 AM Family Dharma Service  
Raymond Takiue Jr.

## August 2026

- 2 9:00 AM DS Coordinated Service  
& Remembrance Service
- 9 9:00 AM Family Dharma Service
- 16 9:00 AM Family Dharma Service  
Raymond Takiue Jr.
- 23 9:00 AM Family Dharma Service
- 30 9:00 AM Family Dharma Service  
Jon Matsuoka

## September 2026

- 6 9:00 AM Remembrance Service
- 13 9:00 AM Ohigan Service (Autumn Equinox)
- 20 9:00 AM Family Dharma Service
- 27 9:00 AM Family Dharma Service

With Heartfelt  
*Sympathy*

Mō'ili'ili Hongwanji Mission extends its deepest sympathy and condolences to the family of:

Mildred Hatsuko Yoshida	4/16/2026	94
Ethel Sachiko Shintaku*	5/6/2026	97
Joanne Sayuri Sakata*	6/7/2026	86

May the Onembutsu provide solace to family members during this time of sorrow.

\* Indicates Temple Sustaining Gojikai Member

# WHITE WAY RADIO

Join us on Saturdays for White Way Radio on KZOO1210 at 7:45 a.m. for inspiring messages from a variety of speakers. We are truly grateful for our White Way sponsors who make it possible to share the Dharma on the air every week. If you missed it go to [www.moililihongwanji.org](http://www.moililihongwanji.org), Buddhist Teachings.

## July 2026

- 4 Mr. Pieper Toyama/ The Matsumoto Family
- 11 Mr. Dennis Tashiro/ Mr. Alan Yokota
- 18 Mr. Josh Hernandez Morse/ Mrs. Jo DesMarets
- 25 Rev. Kojun Hashimoto/ The Horii Family

## August 2026

- 1 Rev. Jeffrey Soga/ The Hirai Family
- 8 Mrs. Debbie Kubota/ Mr. Keith Hamao
- 15 Rev. Candice Shibata/ Mrs. Jo DesMarets
- 22 Rev. Dr. Takashi Miyaji/ The Morikubo Family
- 30 Rev. Marcos Sawada/ Mr. Alan Yokota

## Septembr 2026

- 5 Rev. Shawn Yagi/ The Hirai Family
- 12 Ms. Sheera Tamura/ The Nakata Family
- 19 Rev. Joshin Kamuro/ The Kanazawa Family
- 26 Dr. George Tanabe/ The Miyasaki Family

## White Way Radio Donations

Arnold Matsuura  
Michael and Wendy Sorakubo



Gotan-e speaker-Rev. Candice Shibata



Lay Speaker - Dr. Kaethe Kauffman



Hearts for Arlyne Fundraiser



Gotan-e Karuta



Okano Family



Mother's Day



Father's Day



Ride the Rail